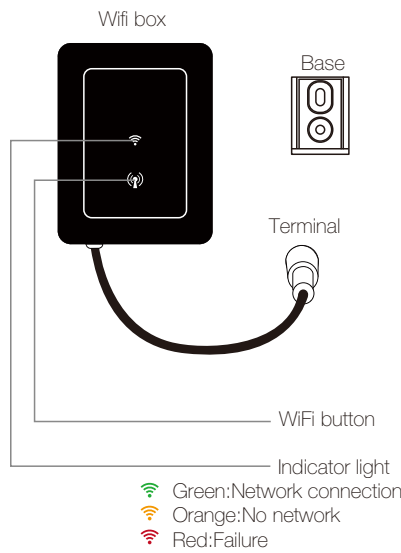
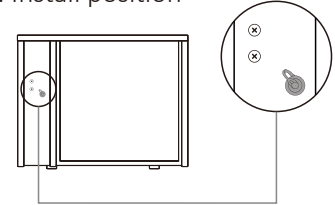


WIFI

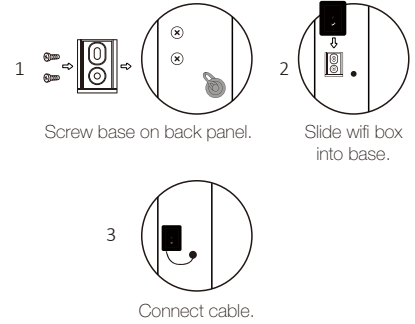
### a.Components



### b. Install position



### c. Installation



### 1. APP Download

Smarter Pool

Android mobile please download from

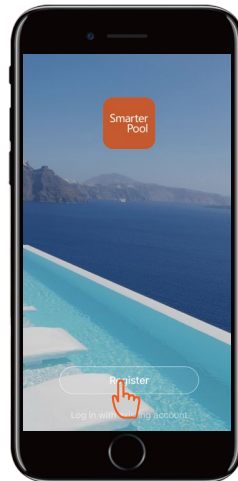


iphone please download from

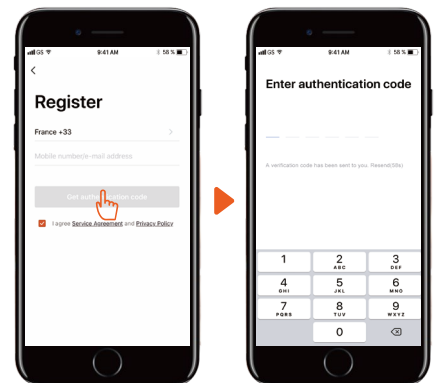


### 2. Account registration

1. Registration by Cell phone number/Email



2. Email registration



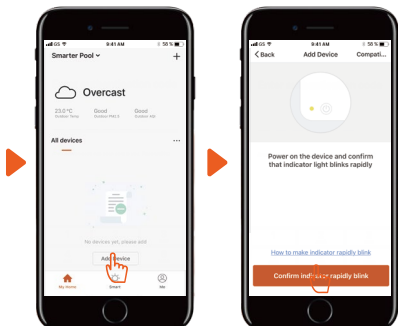
### 3. APP Binding

Please make sure your cell phone has connected the Wifi

1. Press Wifi button for 3 seconds until the Wi-Fi light in quick flashing.

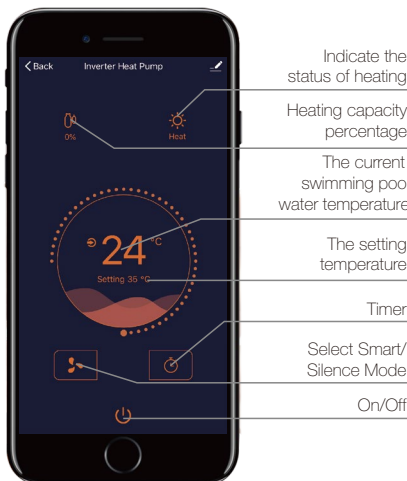


2. Click "Add device", follow indication to finish binding.



### 4. Operation

1. For heat pump with Heating function only :



2. For heat pump with Heating&Cooling function :



Notice:  
 1. If wifi signal can not cover machine, please connect 10 m extend cable (optional, not standard configuration).  
 2. The weather forecast is just for reference.

APP is subject to updating without notice.